

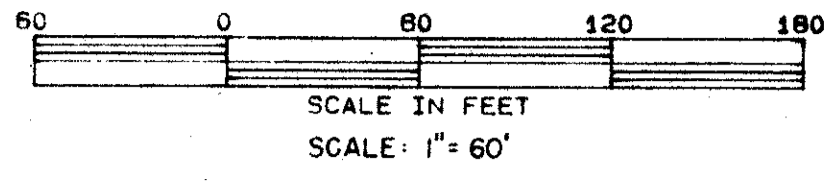
DRAWING NUMBER
46/147

DRAWING NUMBER

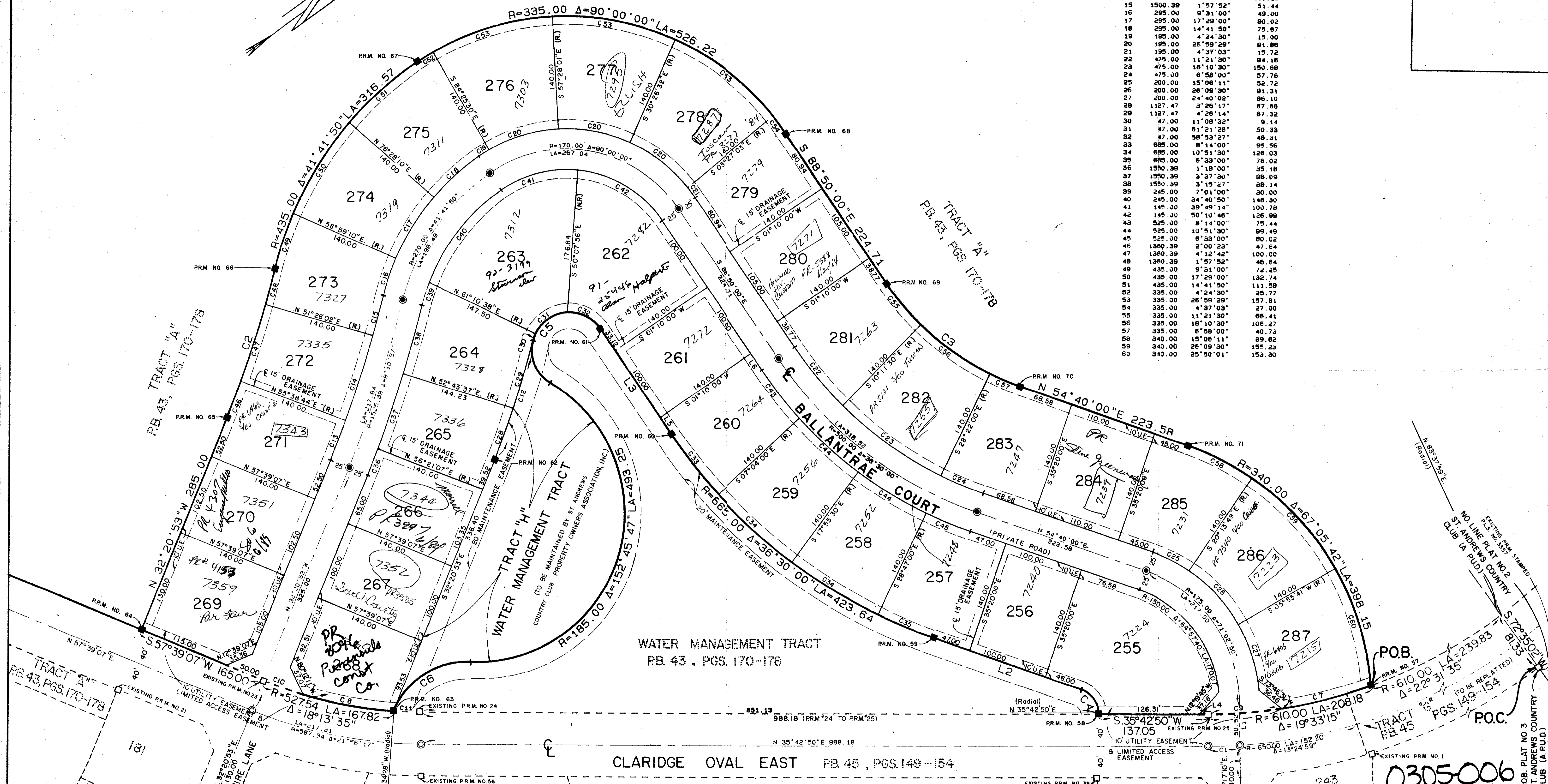
DRAWING NUMBER

DRAWING NUMBER

147



LINE	BEARING	DISTANCE	CURVE	RADIUS	DELTA	ARC
1	S 54°17'10"E	50.52	1	850.00	3°31'33"	40.00
2	S 54°40'00"W	185.00	2	1380.39	8°10'57"	194.28
3	N 88°50'00"W	157.83	3	335.00	36°30'00"	213.41
4	S 35°42'45"W	10.73	4	32.24	71°02'50"	39.97
5	S 88°50'00"E	24.71	5	47.00	205°47'50"	188.82
6	S 88°50'00"E	24.71	6	100.00	69°47'53"	121.82
7			7	810.00	4°47'45"	114.94
8			8	527.54	12°30'59"	115.24
9			9	610.00	6°45'30"	93.25
10			10	527.54	5°42'36"	52.57
11			11	527.54	3°42'42"	34.17
12			12	1127.47	7°52'31"	154.97
13			13	1500.39	2°00'23"	52.54
14			14	1500.39	4°12'42"	110.29
15			15	1500.39	1°57'52"	51.44
16			16	295.00	9°31'00"	49.00
17			17	295.00	17°29'00"	80.02
18			18	295.00	14°41'50"	75.67
19			19	195.00	4°24'30"	15.00
20			20	195.00	26°59'29"	91.86
21			21	195.00	4°37'03"	15.72
22			22	475.00	11°21'30"	84.48
23			23	475.00	18°10'30"	150.86
24			24	475.00	6°58'00"	57.76
25			25	200.00	15°08'11"	52.72
26			26	200.00	28°09'30"	91.31
27			27	200.00	24°40'02"	86.10
28			28	1127.47	3°28'17"	67.86
29			29	1127.47	4°28'14"	87.32
30			30	47.00	11°08'32"	9.14
31			31	47.00	61°21'28"	50.33
32			32	47.00	58°53'27"	48.31
33			33	685.00	8°14'00"	95.56
34			34	685.00	10°51'30"	126.03
35			35	685.00	6°33'00"	76.02
36			36	1550.39	1°18'00"	35.18
37			37	1550.39	3°37'30"	88.09
38			38	1550.39	3°15'27"	68.14
39			39	245.00	7°01'00"	30.00
40			40	245.00	34°40'50"	149.30
41			41	145.00	39°49'14"	100.78
42			42	145.00	50°10'46"	126.99
43			43	325.00	8°14'00"	75.44
44			44	325.00	10°21'30"	89.49
45			45	325.00	6°33'00"	80.02
46			46	1380.39	2°00'23"	47.64
47			47	1380.39	4°12'42"	100.00
48			48	1380.39	1°57'52"	46.64
49			49	435.00	9°31'00"	72.25
50			50	435.00	17°29'00"	132.74
51			51	435.00	14°41'50"	111.58
52			52	335.00	4°24'30"	25.77
53			53	335.00	26°59'29"	157.81
54			54	335.00	4°37'03"	27.00
55			55	335.00	11°21'30"	66.41
56			56	335.00	18°10'30"	106.27
57			57	335.00	6°58'00"	40.73
58			58	340.00	15°08'11"	89.62
59			59	340.00	26°09'30"	155.25
60			60	340.00	25°50'01"	153.30



SUBDIVISION #
BOOK 46
FLOOD ZONE B
QUAD # 52
SE
PUD NAME

PAGE 147
FLOOD MAP # 2017
ZONING
ZIP CODE 33434

PLAT NO. 4 ST. ANDREWS COUNTRY CLUB (A P.U.D.)

WILLIAM E. WALLACE, INC. CONSULTING ENGINEERS, LAND PLANNERS & SURVEYORS 321 NORTH LAKE BLVD. NO. PALM BEACH FL 33480 - 305/842-4233 3241 SW MAPLE RD. PALM CITY PLAZA PALM CITY FL 33460 - 305/283-0308		
FIELD M. BONIN	JOB NO. 83-0274	P.B. PG.
OFFICE J. PETERSON	DATE MAY 1983	DWG. NO. 83-0274
CK'D W.L. FISH	REF 80-789	SHEET 3 OF 3

46/147

0305-006